

STI Testing Swab Guide

Please consider testing all exposed sites. The presence of a sexually transmitted infection increases the risk of HIV acquisition.

Test

Collection Equipment

Pharynx or Rectum Indicated for all pharyngeal and rectal penile or sex toy exposure, including MSM regardless of condom use

Chlamydia
Nucleic amplification acid test (NAAT)
Aptima Swab Specimen Transfer Tube

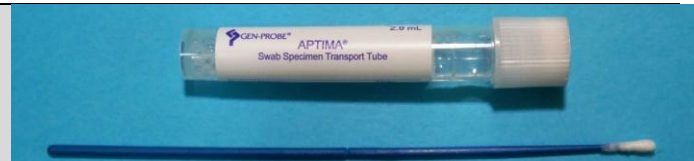


Gonorrhea
Culture
Modified Amies Charcoal

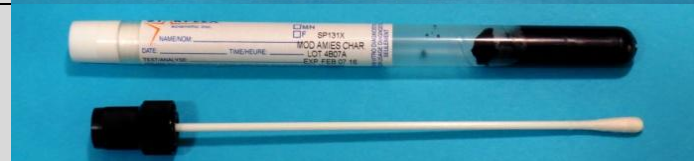


Vagina/Cervix

Chlamydia and Gonorrhea
Nucleic amplification acid test (NAAT)
Aptima Swab Specimen Transfer Tube or urine sample



Gonorrhea Culture * add if symptomatic
Culture
Modified Amies Charcoal



Trichomoniasis
Modified Amies Clear

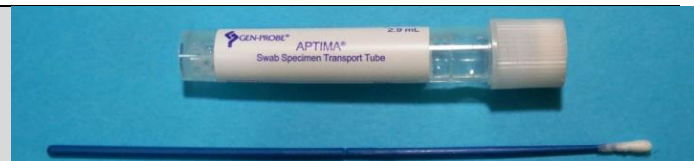


Bacterial Vaginosis or Yeast
Culture
Modified Amies Clear

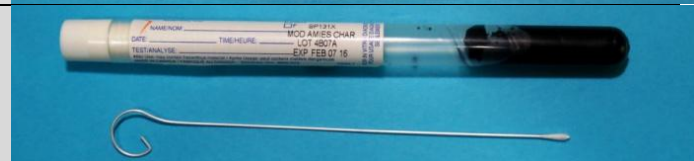


Penile Urethral

Chlamydia and Gonorrhea *if urine sample not available
Nucleic amplification acid test (NAAT)
Aptima Swab Specimen Transfer Tube collection kit



Gonorrhea Culture *add if symptomatic
Culture
Dacron Swab (individually packaged) in Modified Amies Charcoal



Mycoplasma/Ureaplasma *if gonorrhea and chlamydia negative (Also consider epitreatment for trichomoniasis)
PCR
Dacron Swab (individually packaged) in Modified Amies Charcoal



Other

Syphilis
PCR
Dacron Swab (individually packaged) from anogenital or mucosal sites in viral medium



Herpes Simplex
Viral Culture
Dacron or cotton tipped swab (both individually packaged) in viral medium



References:

Cadham Provincial Laboratory: Guide to Services 2015. Manitoba Health; 2015. p. 1-135

Diagnostic Services of Manitoba. [Lab Information Manual](#). Accessed May 19, 2017

Diagnostic Services of Manitoba. [Sample Collection Procedure Manual](#). Reviewed July 24, 2015